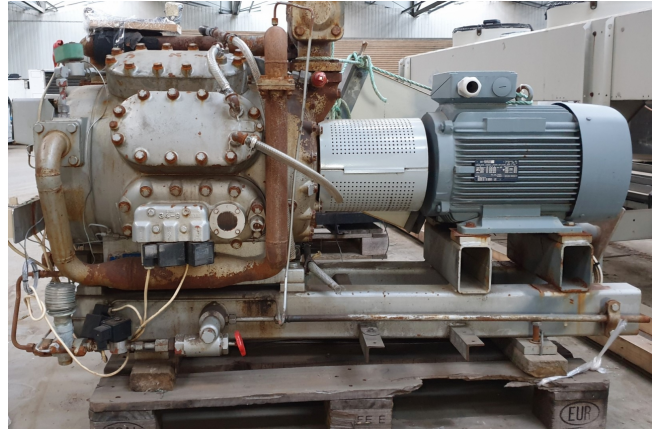


Sabroe TCMO 28

Specifications

Marka	Sabroe
Typ	TCMO 28
Czynnik chłodzący	NH 3 (ammonia)
kW at -20°C/+40°C	52,7
kW at -30°C/+40°C	32,4
kW at -40°C/+40°C	18,7
Podstawa na stalowej ramie	✓
Ciśnieniowe przełączniki bezpieczeństwa	✓
Wskaźniki ciśnienia	✓
Okno widokowe	✓
m ³ / h	142
Rozmiary	1540x890x940 mm (LxWxH)
Stock	1



Description

Used Sabroe TCMO 28

Used Sabroe TCMO 28 two-stage reciprocating compressor. Complete with VEM electromotor 50 Hz - 18,5 kW - 1460 RPM, safety pressure switches and gauges.

*Why choose for HOSBV? Were not only the largest used refrigeration specialist in Europe, but also, we deliver all equipment including an extensive test, warranty and an industrial cleaning.

*Optionally we can also perform a new paint job and arrange the logistics.

